

16mm single lens oval beam for architecture lighting

| | |
|----------------|----------------|
| Model: | AFL16D9H2090G |
| Size: | Ø16.11mm |
| Height: | 8.72mm |
| Beam Angle: | 20x90° |
| Material: | PMMA |
| Transmittance: | >93% |
| LED Type: | LED Cree XP-G4 |

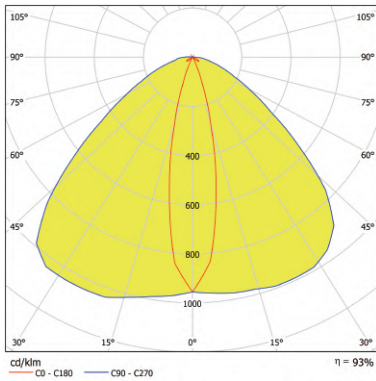


FEATURES

1. This 16mm single lens with beam angle 20x90° is widely used in architecture lighting.
2. This 16mm single lens can be tightly fixed on PCB board by fix pins and 3M tape.



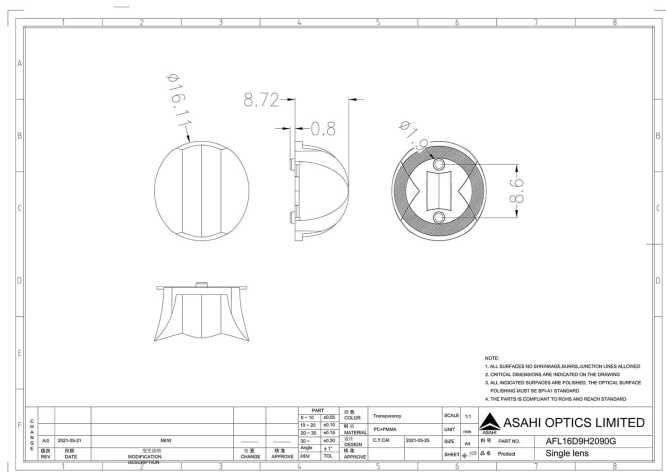
LENS LIGHT DISTRIBUTION & APPLICATION



20x90°



LENS DRAWING



LED TYPE



LED Cree XP-G4



LED Cree XP-G4

LED BRAND

