

## 173mm 2x6 Area Illumination Optics 5050LED TYPE III Medium

Model:	ALD173D12LEDT3M
Size:	173x71.4(mm)
Height:	10.85mm
Beam Angle:	T3M Asymmetric
Material:	PC
Transmittance:	>90%
LED Type:	5050 LED

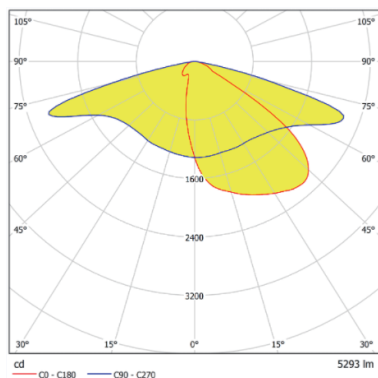


### FEATURES

1. 2x6-TypeIII-Medium lens suitable for various outdoor lighting applications, including street lighting, parking lots, highways, and residential areas.
2. The design of the 2x6 Type III-Medium lens provides wide horizontal illumination, suitable for streetlight applications that require even light distribution on wider roads or squares, ensuring effective lighting coverage across the entire region.
3. Constructed from polycarbonate materials, offering durability and resistance to weather, UV radiation, and impact.



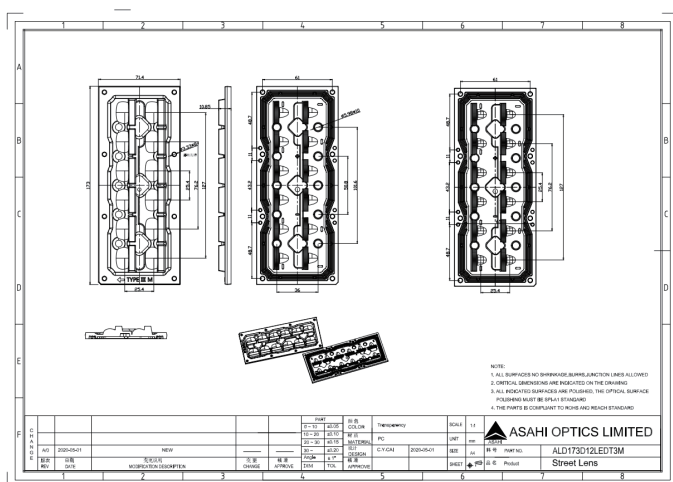
## LENS LIGHT DISTRIBUTION & APPLICATION



T3M Asymmetric



## LENS DRAWING



## LED TYPE



5050LED



5050LED

## LED BRAND

