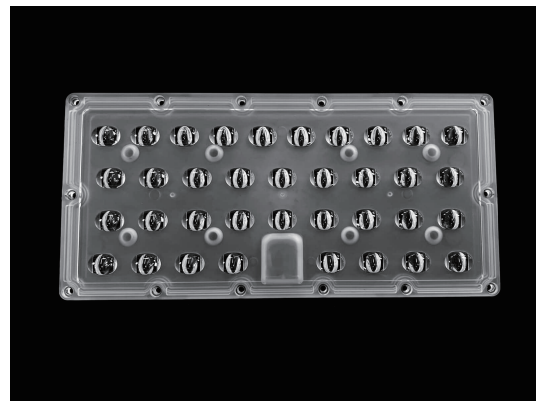


36in1 lens Type II medium excellent Cutoff beam for street lighting

Model:	ARST36LEDT2M-cutoff
Size:	253.5x120mm
Height:	9.6mm
Beam Angle:	T2M-cutoff
Material:	PC
Transmittance:	>88%
LED Type:	5050LED



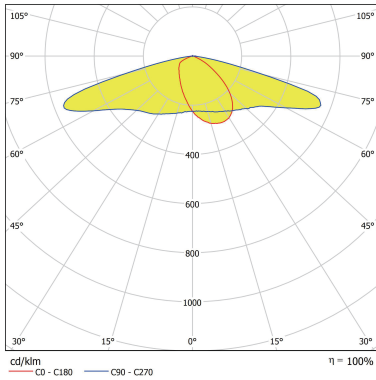
FEATURES

1. 236x120mm rectangular structure with the aim of providing more options for luminaire manufacturers. This size is suitable for luminaires that require a larger luminous area or special installation needs, such as high power LED modules, large industrial lighting or customized commercial lighting.

2. T2M-CUTOFF light distribution enables a clear cut-off line of light spots, ensuring that the light is focused on areas that need to be illuminated (e.g., roadways, sidewalks) and avoiding light scattering to unwanted areas



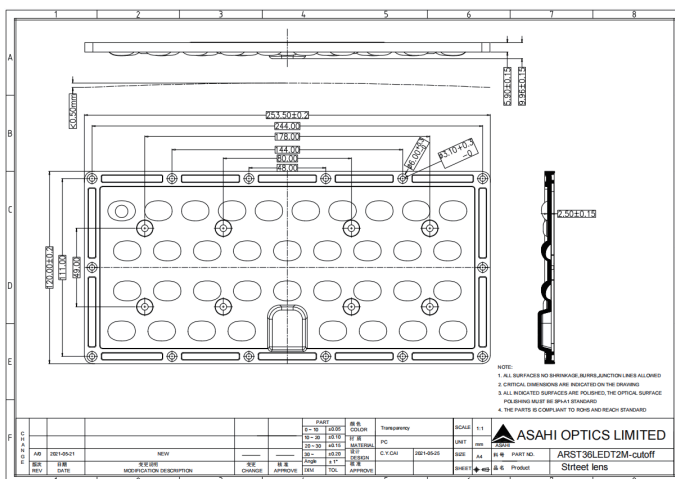
LENS LIGHT DISTRIBUTION & APPLICATION



T2M-cutoff



LENS DRAWING



LED TYPE



5050LED



5050LED

LED BRAND

