

36LEDs high power lens for Stadium lighting

Model:	AJHB180D36LED10G
Size:	178.91x178.91(mm)
Height:	16.83mm
Beam Angle:	10°
Material:	PC
Transmittance:	>90%
LED Type:	3535LED

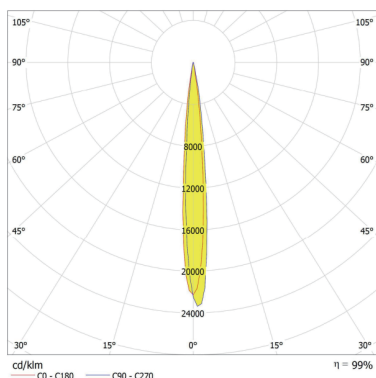


FEATURES

1. High Power lens module for Stadium lighting and Floodlight, with completely optical beam angles 10°, 15°, 30°, 45°, 60°, 90°.
2. The 10-degree lens is able to effectively focus the light emitted by the 3535 LEDs so that the light is concentrated in a smaller area, thus significantly increasing the intensity and distance of the beam. This is ideal for scenes that require long distance or focused illumination.



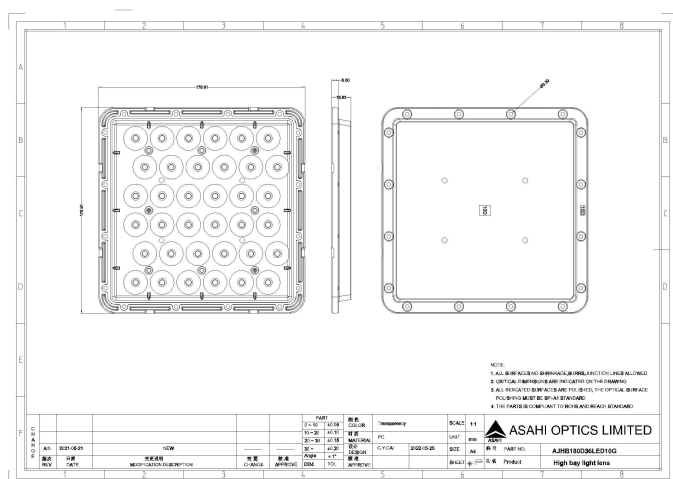
LENS LIGHT DISTRIBUTION & APPLICATION



10°



LENS DRAWING



LED TYPE



3535LED



3535LED

LED BRAND

