

2x3 Lens 5050LED Asymmetric 45degree Sports Field Lens

Model:	AJSP50D6LED5050P45G
Size:	50x50(mm)
Height:	9.42mm
Beam Angle:	Asymmetric 45°
Material:	PC
Transmittance:	>90%
LED Type:	5050LED

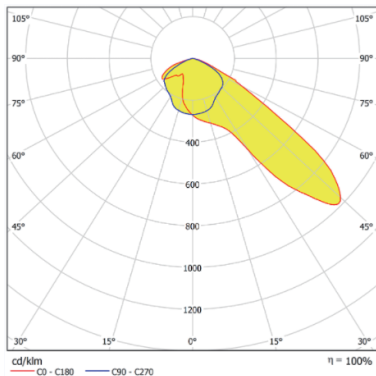


FEATURES

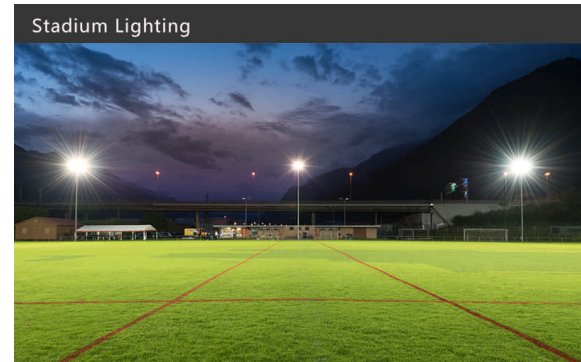
1. The 2x3 asymmetric 45degree stadium light lens helps minimize glare by selectively allowing light waves oriented in a specific direction to pass through. This is beneficial for providing a comfortable viewing experience for both players and spectators.
2. The lenses are versatile and can be applied to different sports fields, providing tailored lighting solutions for activities such as soccer, football, baseball, or tennis.



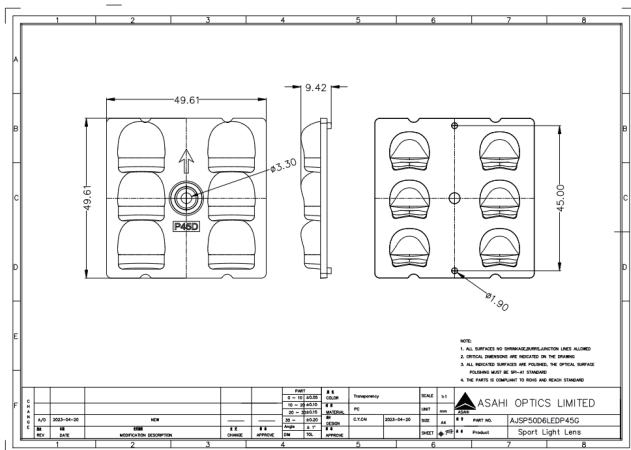
LENS LIGHT DISTRIBUTION & APPLICATION



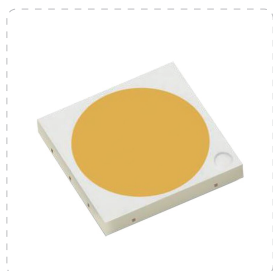
Asymmetric 45°



LENS DRAWING



LED TYPE



5050LED



5050LED

LED BRAND

