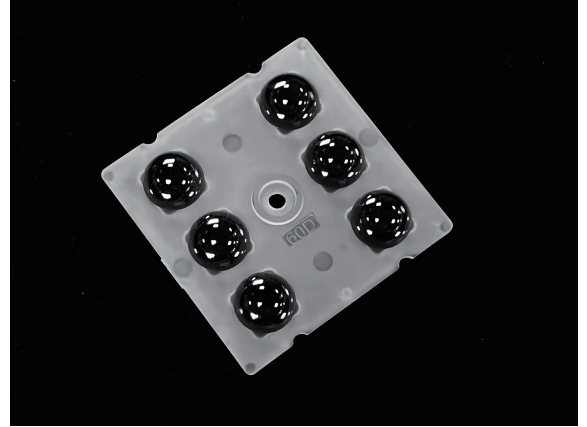


2x3 lens 60° beam for area lighting

Model:	AJHB50D6LED60G-3S
Size:	50x50(mm)
Height:	8.80mm
Beam Angle:	60°
Material:	PC-1250Z
Transmittance:	> 88%
LED Type:	5050LED

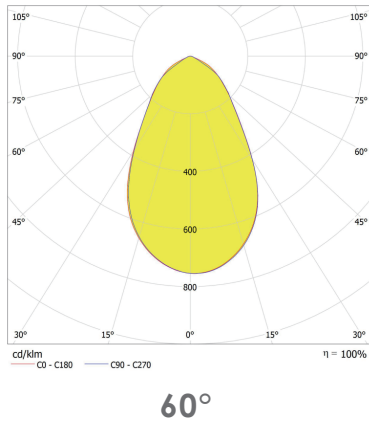


FEATURES

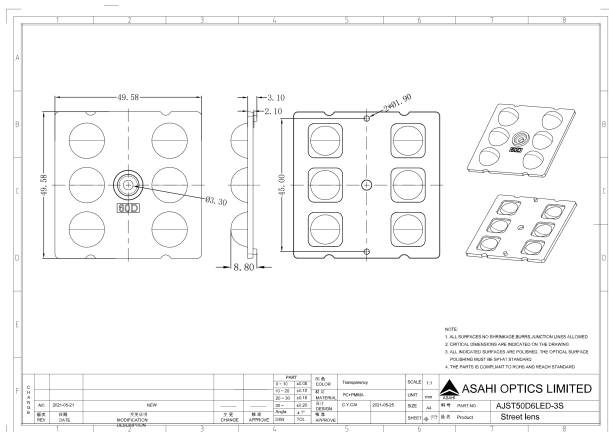
1. The 2x3 lens 60° is specifically designed for 5050 LEDs, providing a wide 60° beam angle for extensive light coverage.
2. The 2x3 lens 60° is resistant to UV radiation, heat, and environmental wear. Its robust design ensures long-lasting performance, making it suitable for both indoor and outdoor applications.



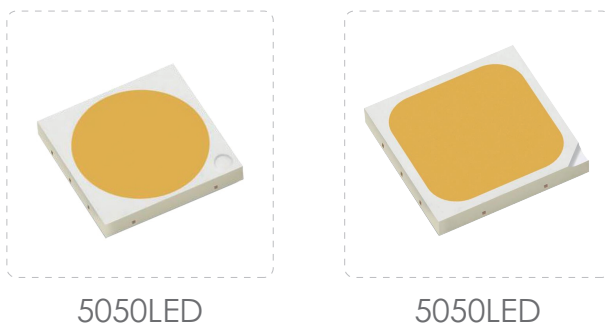
LENS LIGHT DISTRIBUTION & APPLICATION



LENS DRAWING



LED TYPE



LED BRAND

