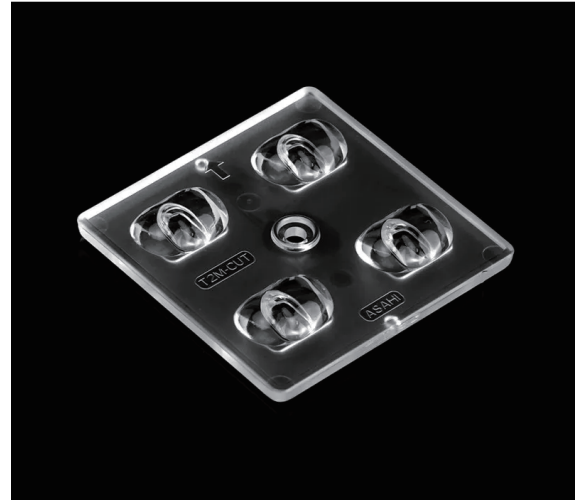


2x2 Typell-M Street Light Lens With Excellent Cutoff

Model:	ARST50D4LED5050T2M-cutoff
Size:	50x50(mm)
Height:	7.48mm
Beam Angle:	T2M-cutoff
Material:	PC-1250Z
Transmittance:	> 93%
LED Type:	5050LED

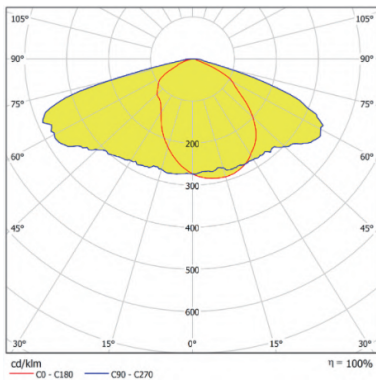


FEATURES

1. This 2X2 lens is developed for TYPE II-Medium(T2M) CUT-OFF and BUG standard, which ensures that the luminaires with excellent backlight control, illuminance uniformity, and cutoff light distribution.
2. The street light optical diagram T2M-cutoff is strictly required by Brazil government have to pass IMMETRO certification.
3. This lens is compatible with different LEDs Brands such as OSRAM S8, NICHIA488, LUMILEDS5050, SEOUL5050.



LENS LIGHT DISTRIBUTION & APPLICATION

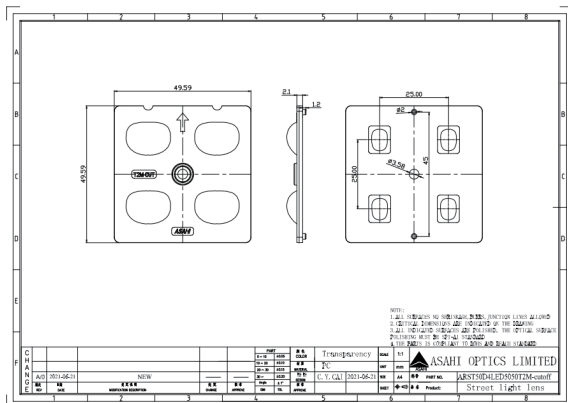


T2M-cutoff

Area Lighting/Street Lighting/Architecture Lighting



LENS DRAWING



LED TYPE



5050LED



5050LED

LED BRAND

