

2x2 Lens Type I Medium beam for narrow roads and paths

Model:	ARST50D4LED5050T1M
Size:	50x50(mm)
Height:	6.98mm
Beam Angle:	TypeI Medium
Material:	PMMA
Transmittance:	> 93%
LED Type:	5050LED

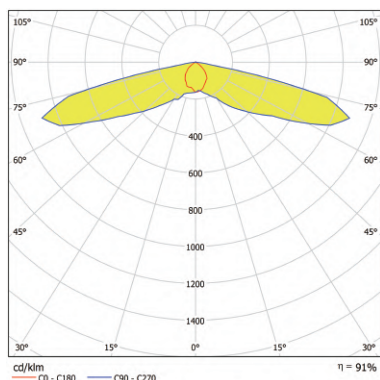


FEATURES

1. The 2x2 lens T1 medium is engineered to deliver precise and controlled light distribution for medium-range applications.
2. Its optimized optical design ensures balanced illumination, making it ideal for outdoor lighting, such as pathways, parking lots, and residential areas.



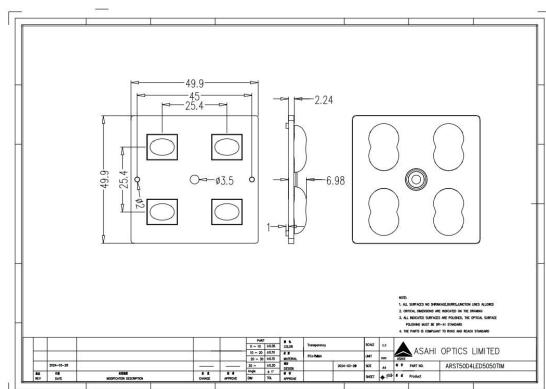
LENS LIGHT DISTRIBUTION & APPLICATION



Typel Medium



LENS DRAWING



LED TYPE



5050LED



5050LED

LED BRAND

