

2x2 Typell-M Highway Illumination Lens With Back Light

Model:	ALST50D4LEDT2WB
Size:	50x50(mm)
Height:	8.93mm
Beam Angle:	TYPE II-M With Backlight
Material:	PMMA
Transmittance:	> 93%
LED Type:	5050 LED

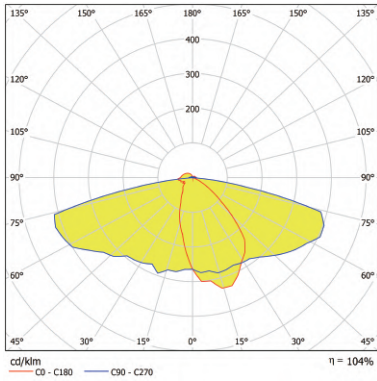


FEATURES

1. The design of the 2x2 Typell-Medium with backlight lens helps to increase the overall brightness of the streetlight, improving visibility in the surrounding environment and making it easier for pedestrians and drivers to perceive their surroundings.
2. It's made of high quality PMMA material, exhibits excellent thermal stability, maintaining optical performance under a wide range of temperatures and environmental conditions.



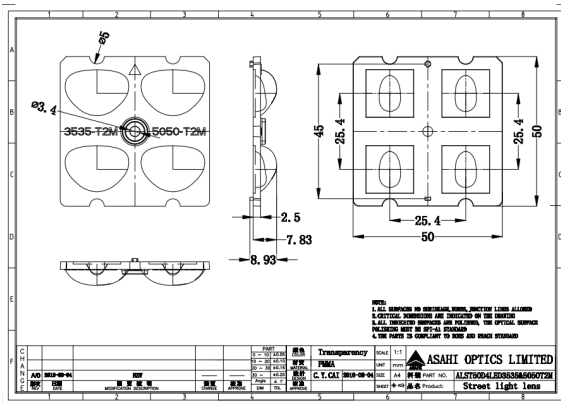
LENS LIGHT DISTRIBUTION & APPLICATION



TYPE II-M With Backlight



LENS DRAWING



LED TYPE



5050LED



5050LED

LED BRAND

