

Typelll-M 2X2 7070LED High Poles Road Lighting Lens

Model:	ALST50D4LED7070T3M
Size:	50x50(mm)
Height:	8.55mm
Beam Angle:	Type III Asymmetric
Material:	PMMA
Transmittance:	> 93%
LED Type:	7070LED

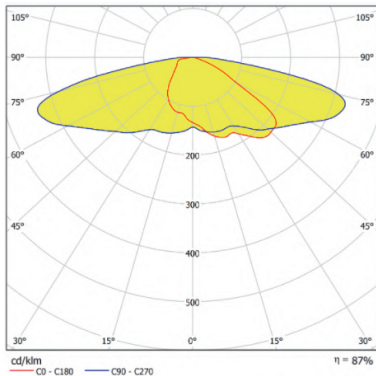


FEATURES

1. The 2x2 lens is designed for high power 7070LED.
2. The design of the 2x2 Type III-Medium lens provides wide horizontal illumination, suitable for streetlight applications that require even light distribution on wider roads or squares, ensuring effective lighting coverage across the entire region.
3. Suitable for various outdoor lighting applications, including street lighting, parking lots, highways, and residential areas.



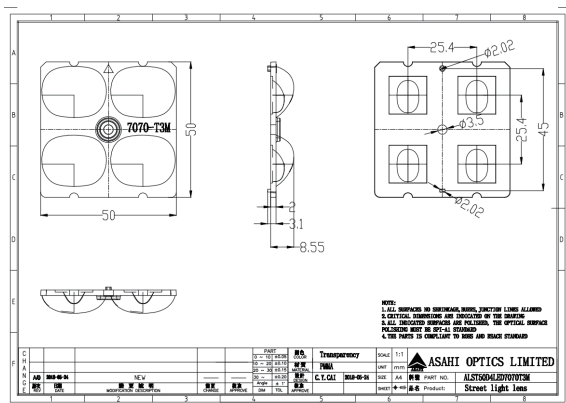
LENS LIGHT DISTRIBUTION & APPLICATION



Type III Asymmetric



LENS DRAWING



LED TYPE



7070LED

LED BRAND

