

## 2x2 80x60degree Optical Lens For Parking Lot Lighting

Model:	ALST50D4LED5050T8060G
Size:	50x50(mm)
Height:	8.91mm
Beam Angle:	T4 80x60°
Material:	PC-1250Z
Transmittance:	>90%
LED Type:	5050LED

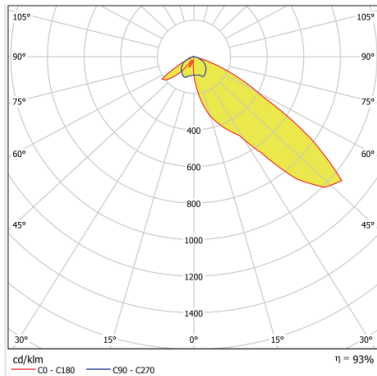


### FEATURES

1. The design of the 2x2 Type IV 80x60° lens provides directional illumination, making it suitable for streetlight applications that require long-distance projection in wider areas.
2. Suitable for various outdoor lighting applications, including street lighting, parking lots, highways, and residential areas.
3. Offers a long lifespan with minimal maintenance requirements, reducing the need for frequent replacements and associated costs.



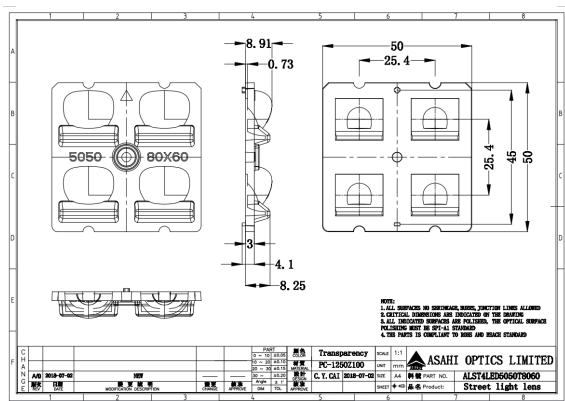
## LENS LIGHT DISTRIBUTION & APPLICATION



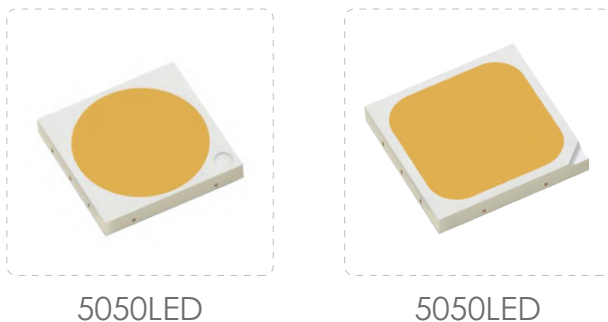
**T4 80x60°**



## LENS DRAWING



## LED TYPE



## LED BRAND

