

Typell-Medium 5050LED Efficient Roadway Lighting Lens

Model:	ALST50D4LED5050T2M
Size:	50x50(mm)
Height:	7.95mm
Beam Angle:	T2M
Material:	PMMA , PC-1250Z
Transmittance:	> 90%
LED Type:	5050LED

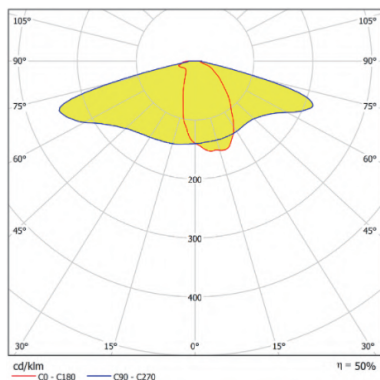


FEATURES

1. 2x2 Typell-Medium street lens, through specialized optical design, the Type II-Medium lens can reduce upward or surrounding light scatter, helping to minimize light pollution levels and concentrating light where it's needed.
2. Suitable for various outdoor lighting applications, including street lighting, parking lots, highways, and residential areas.
3. Provides clear and uniform illumination, improving visibility for pedestrians, cyclists, and motorists, enhancing safety.



LENS LIGHT DISTRIBUTION & APPLICATION

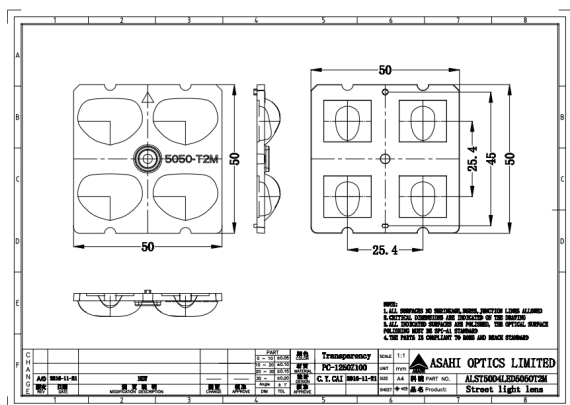


T2M

Area Lighting/Street Lighting/Architecture Lighting



LENS DRAWING



LED TYPE



5050LED



5050LED

LED BRAND

