

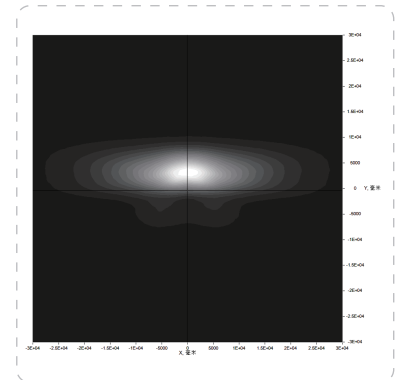
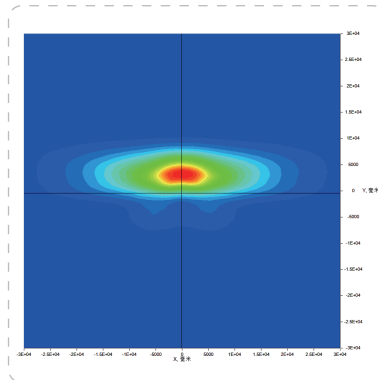
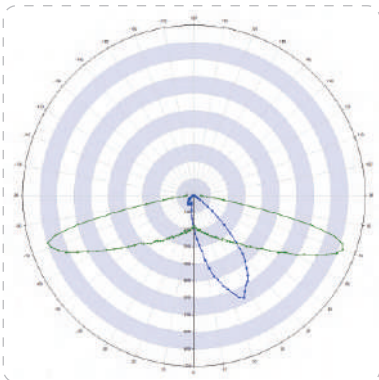
2x2 lens for long pole distance

Model:	ALST50D4LED5050T2M-L
Size:	50x50(mm)
Height:	7.85mm
Beam Angle:	T2M-L
Material:	TEIJIN PC-1250Z
Transmittance:	90%
LED Type:	5050LED

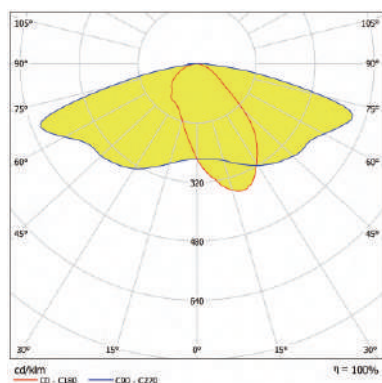


FEATURES

1. Extended light coverage for long pole spacing.
2. This 2x2 lens is specifically designed for lighting systems with long pole-pole distances, ensuring consistent and wide light distribution over expansive areas.
3. Its advanced optical design minimizes dark spots and provides uniform illumination, making it ideal for highways, large parking lots, and open public spaces.



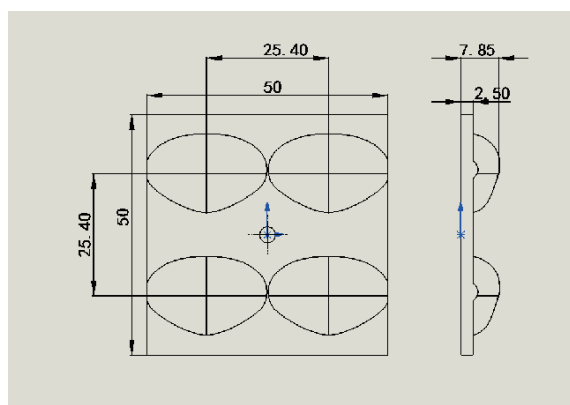
LENS LIGHT DISTRIBUTION & APPLICATION



T2M-L



LENS DRAWING



LED TYPE



5050LED



5050LED

LED BRAND

