

2x2 7degree Narrow Beam High Mast Sport Lighting Lens

Model:	ALSP50D4LED3535T7
Size:	50x50(mm)
Height:	15mm
Beam Angle:	7°
Material:	PC-1250Z
Transmittance:	> 93%
LED Type:	3535LED

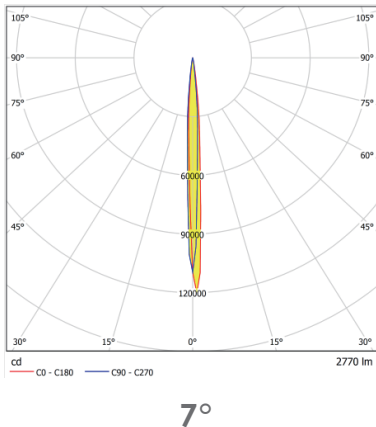


FEATURES

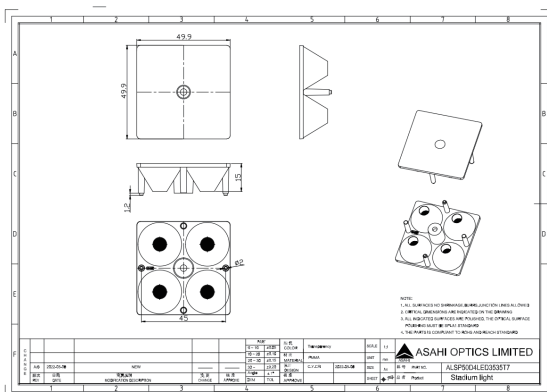
1. Featuring a narrow angle of 7 degrees, this lens is specifically designed for sports field illumination.
2. The small angle ensures precise beam control, delivering focused and uniform lighting suitable for sports arenas, enhancing visibility and creating an optimal playing environment.
3. The lens minimizes glare and light spillage, enhancing visual comfort for players and spectators while reducing light pollution in surrounding areas.



LENS LIGHT DISTRIBUTION & APPLICATION



LENS DRAWING



LED TYPE



3535LED



3535LED

LED BRAND

