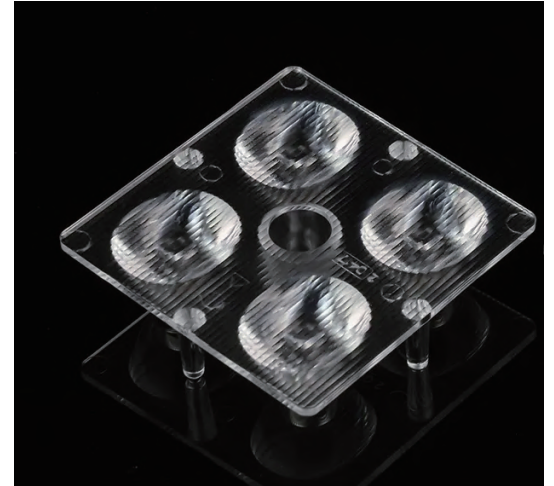


2x2 Sport Lighting Lens TypeI Beam For Tennis Court

Model:	ALSP50D4LED3535T1VS-B
Size:	50x50(mm)
Height:	11.25mm
Beam Angle:	T1VS-B
Material:	PC-1250Z
Transmittance:	> 93%
LED Type:	3535LED

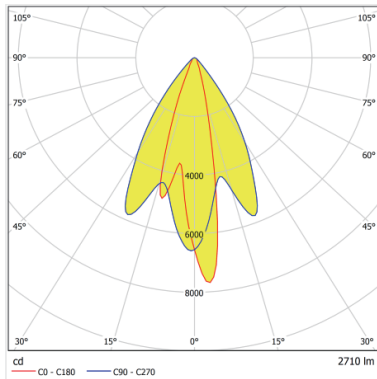


FEATURES

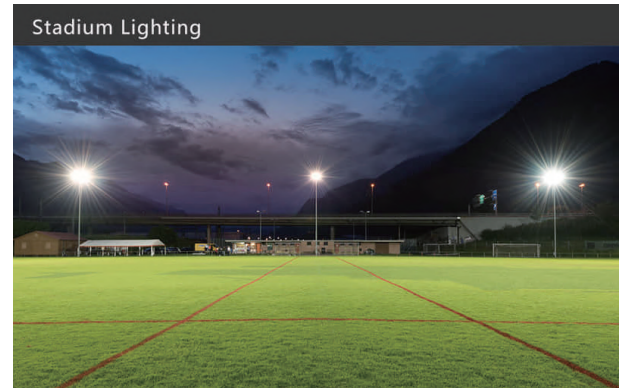
1. The design of TYPE I-Very Short sport light lenses helps reduce glare, providing a comfortable viewing experience for both athletes and spectators.
2. 2x2 sport lenses are versatile and can be applied to different sports fields, providing tailored illumination for activities such as tennis, basketball, or volleyball.
3. Offers a long operational lifespan, reducing the need for frequent replacements and maintenance, and providing cost savings over time.



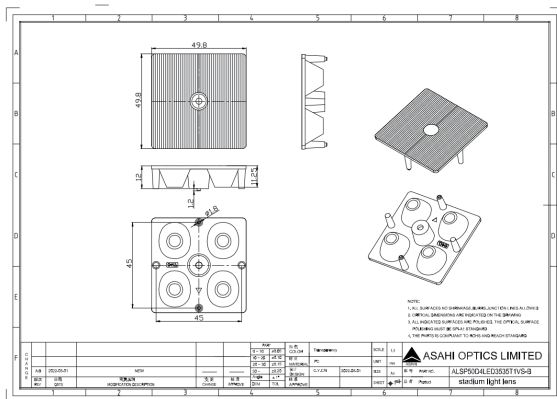
LENS LIGHT DISTRIBUTION & APPLICATION



T1VS-B



LENS DRAWING



LED TYPE



3535LED



3535LED

LED BRAND

