

2x2 5050LED Sport Light Lens With Precision Beam Control

Model:	ALSP50D4LED3535T1VS-A
Size:	50x50(mm)
Height:	13.5mm
Beam Angle:	T1VS-A
Material:	PC-1250Z
Transmittance:	> 93%
LED Type:	3535LED

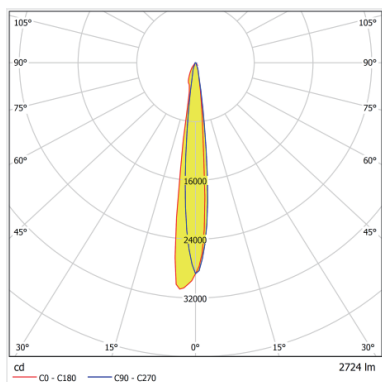


FEATURES

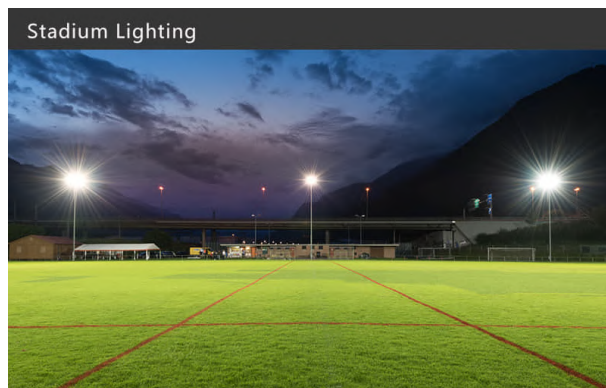
1. The design of TYPE I-Very Short sport light lenses helps reduce glare, providing a comfortable viewing experience for both athletes and spectators.
2. 2x2 sport lenses are versatile and can be applied to different sports fields, providing tailored illumination for activities such as tennis, basketball, or volleyball.
3. The 2x2 sport lens designed for easy maintenance and cleaning, ensuring continuous operation during sports events.



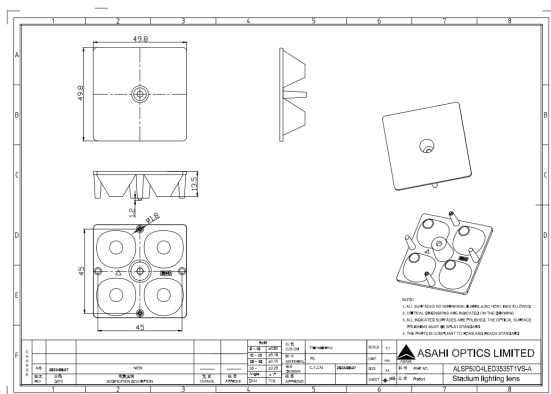
LENS LIGHT DISTRIBUTION & APPLICATION



T1VS-A



LENS DRAWING



LED TYPE



3535LED



3535LED

LED BRAND

