

3535LED 30degree PMMA High Efficiency Flood Light Lens

Model:	ALHB50D4LED3535T30G
Size:	50x50(mm)
Height:	10.6mm
Beam Angle:	30°
Material:	PMMA
Transmittance:	> 93%
LED Type:	3535LED

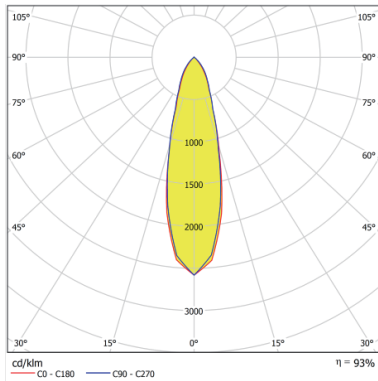


FEATURES

1. The 2x2 lens with a 30° small beam angle, designed for use with 3535 LEDs.
2. It's made of PMMA material with high light transmittance.
3. Offering a versatile, energy-efficient, and cost-effective solution across flood lighting, high bay lighting, and stadium lighting applications.



LENS LIGHT DISTRIBUTION & APPLICATION

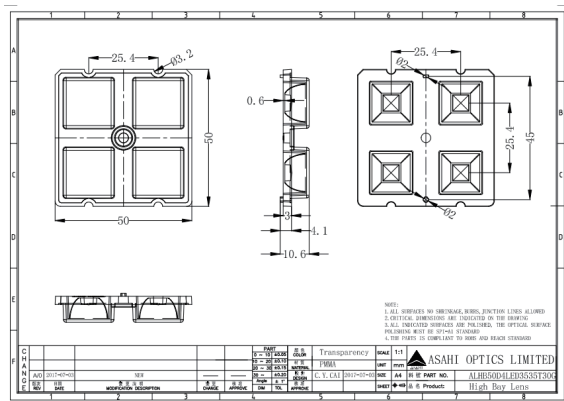


30°

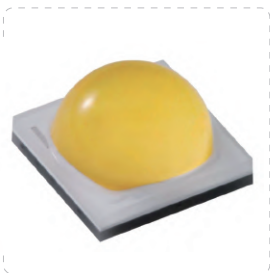
Industrial Lighting/Area Lighting/High Bay Light



LENS DRAWING



LED TYPE



3535LED



3535LED

LED BRAND

