

3535LED 10degree Narrow Beam Sport Stadium Lighting Lens

Model:	ALHB50D4LED3535T10G
Size:	50x50(mm)
Height:	10.6mm
Beam Angle:	10°
Material:	PMMA
Transmittance:	> 93%
LED Type:	3535LED

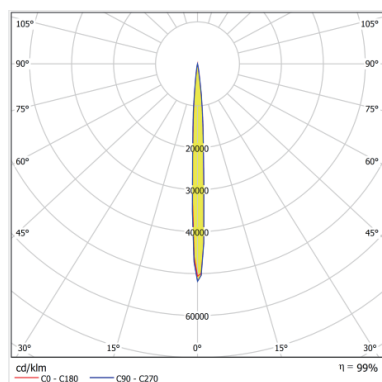


FEATURES

1. The 2x2 lens with a 10° small beam angle, designed for use with 3535 LEDs,.
2. The lens ensures even distribution of light across the illuminated area, minimizing dark spots and hotspots.
3. Offering a versatile, energy-efficient, and cost-effective solution across flood lighting, high bay lighting, and stadium lighting applications etc.



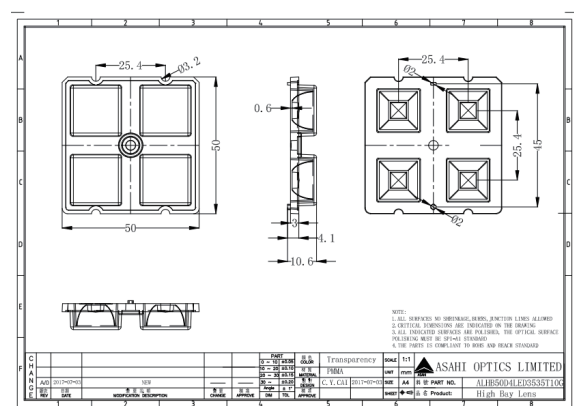
LENS LIGHT DISTRIBUTION & APPLICATION



10°



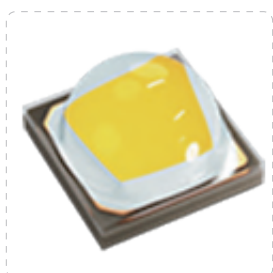
LENS DRAWING



LED TYPE



3535LED



3535LED

LED BRAND

