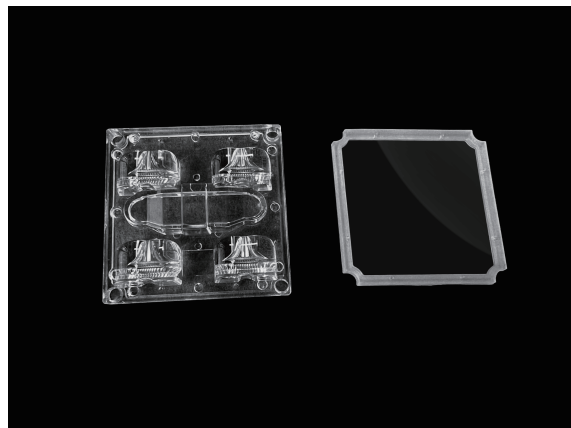


50mm IP66 2x2 lens Typell Medium 5050 LED for street lighting

Model:	AJST50D4LEDT2M
Size:	50x50(mm)
Height:	9.24mm
Beam Angle:	Type II
Material:	PC
Transmittance:	>88%
LED Type:	5050LED

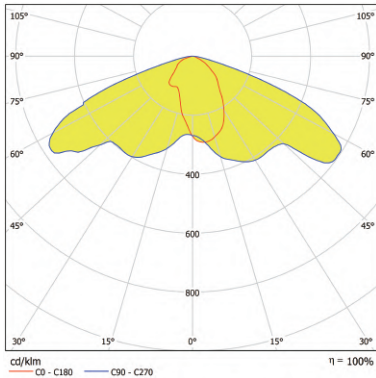


FEATURES

1. This 2x2 lens T2M was designed by 5050LED and widely used for street lighting.
2. Its PMMA material can enable the luminaire to achieve 93% lighting efficiency.
3. 50x50mm dimension makes itself suit various of luminaire fixtures.



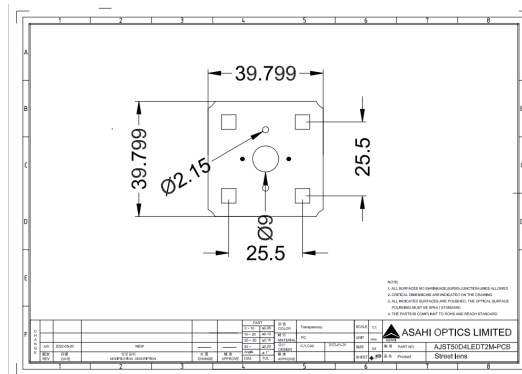
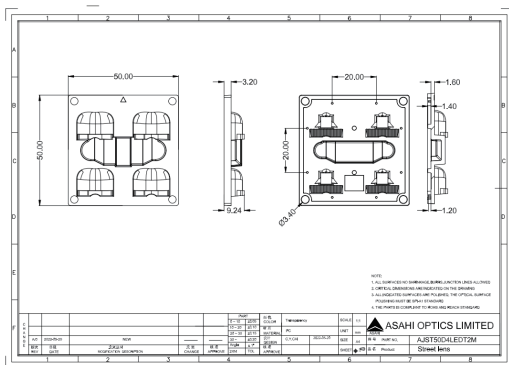
LENS LIGHT DISTRIBUTION & APPLICATION



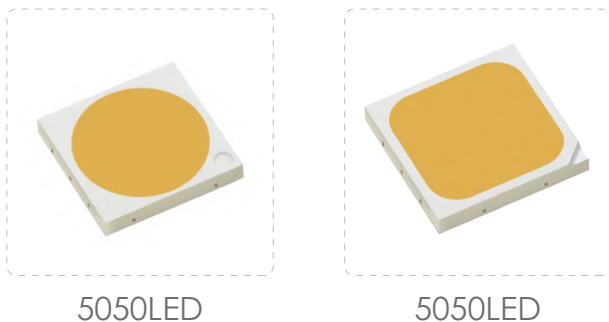
Type II



LENS DRAWING



LED TYPE



5050LED

5050LED

LED BRAND

