

2x2 Typell Street lens designed for ME1-lighting classes according to EN 13201-2

Model:	AJST50D4LED5050ME1
Size:	50x50(mm)
Height:	8.10(mm)
Beam Angle:	Typell-ME1
Material:	PC
Transmittance:	> 92%
LED Type:	5050LED

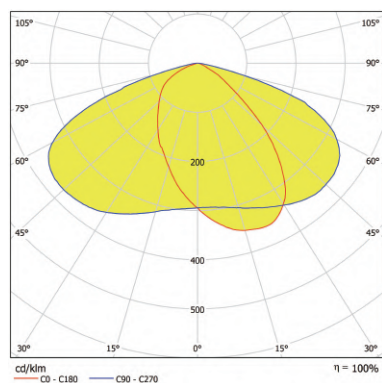


FEATURES

1. The 2x2 lens T2 medium ME1 is designed to provide precise and efficient light distribution for medium-range applications.
2. This lens was designed for ME1-lighting classes according to EN 13201-2



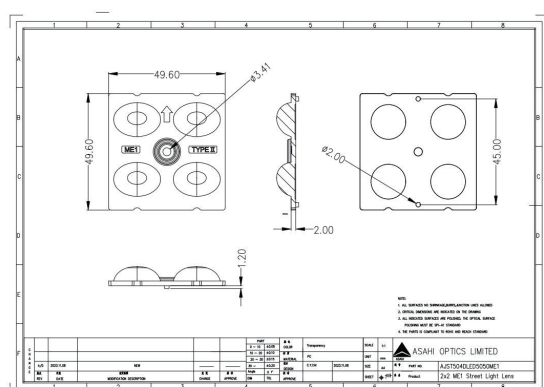
LENS LIGHT DISTRIBUTION & APPLICATION



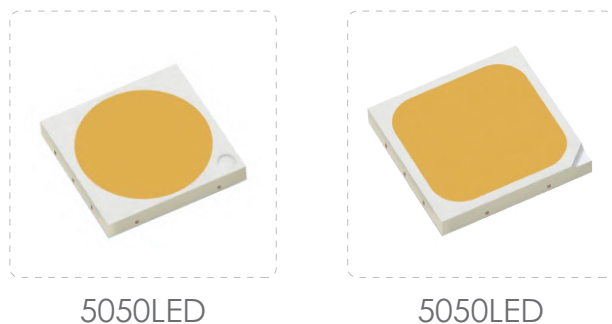
Typell-ME1



LENS DRAWING



LED TYPE



LED BRAND

