

2x2 High Bay Light Lens with oval beam 20x50°

Model:	AJST50D4LED2050G
Size:	50x50(mm)
Height:	11.2mm
Beam Angle:	20x50°
Material:	PMMA
Transmittance:	> 93%
LED Type:	3535LED

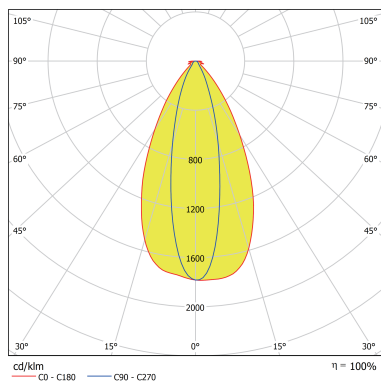


FEATURES

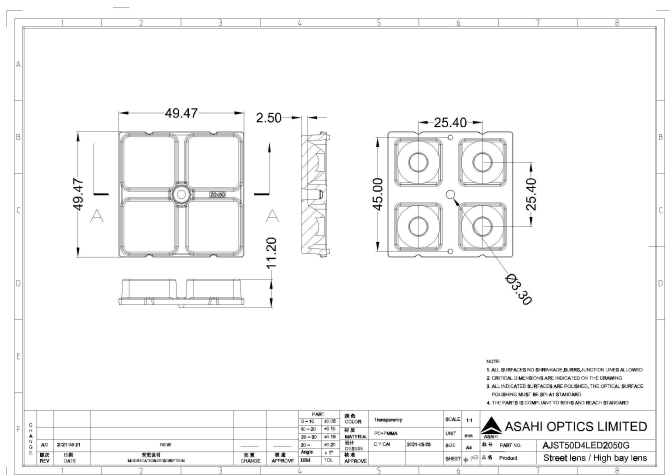
1. Precise Light Distribution: Oval optical design provides an asymmetric beam angle of 20°x50°, ensuring efficient area illumination coverage. Ideal for warehouses, factories, parking lots, platforms, and other scenes requiring directional wide-angle lighting.
2. High-Transmittance PMMA Material: Over 92% light transmission, precise light control, minimized light loss, and uniform light distribution with reduced glare.
3. Durable & Anti-Aging: UV-resistant, high-temperature endurance (-40℃~80℃), no yellowing or deformation over time, suitable for harsh industrial environments.



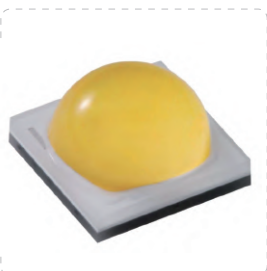
LENS LIGHT DISTRIBUTION & APPLICATION



LENS DRAWING



LED TYPE



3535LED



3535LED

LED BRAND

