

2x2 High Bay Light Lens with oval beam 15x110°

Model:	AJST50D4LED15110G
Size:	50x50(mm)
Height:	12.7mm
Beam Angle:	15x110°
Material:	PMMA
Transmittance:	> 93%
LED Type:	3535LED

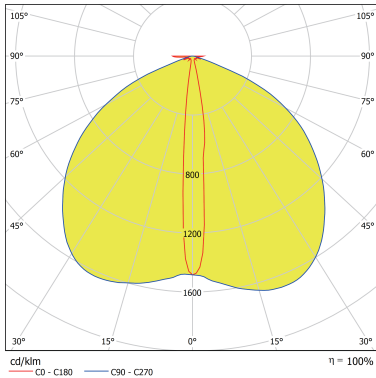


FEATURES

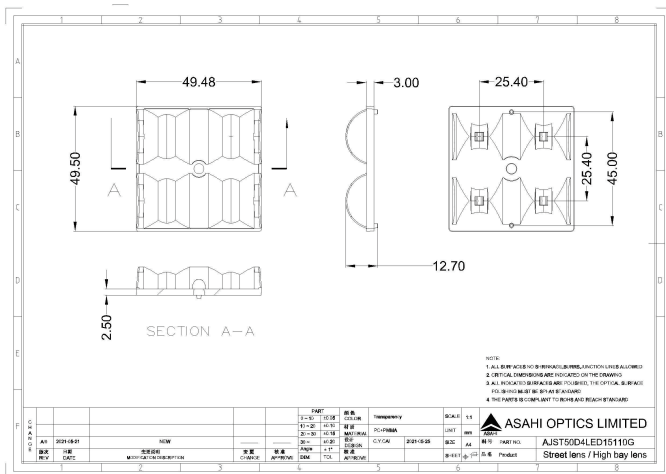
1. Lightweight Design: Lighter than glass, easy to install, reducing transportation and labor costs.
2. Excellent Compatibility: Standard 2x2-inch (50x50mm) size fits most high bay light modules, with customizable optical solutions available.



LENS LIGHT DISTRIBUTION & APPLICATION



LENS DRAWING



LED TYPE



3535LED



3535LED

LED BRAND

