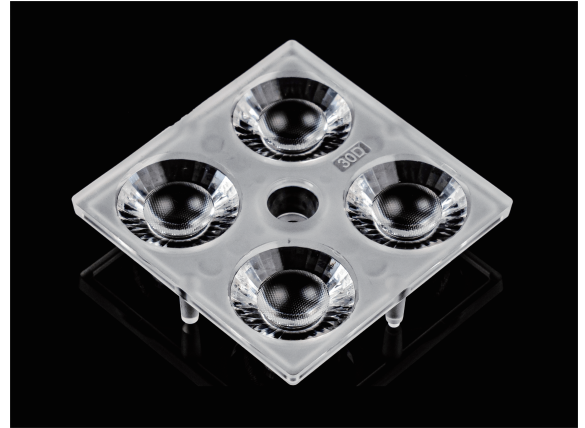


2x2 High bay Light 30degree compabtible with 7070LEDs

Model:	AJHB50D4LED7070T30G
Size:	50x50(mm)
Height:	9.5mm
Beam Angle:	30°
Material:	PC
Transmittance:	> 93%
LED Type:	4x3030/5050/7070/LED

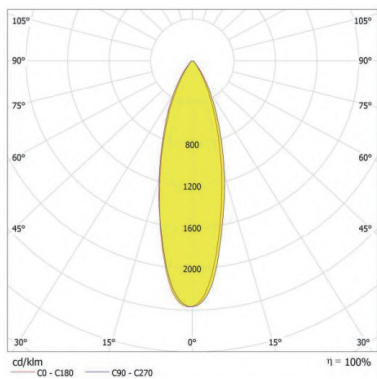


FEATURES

1. The 2x2 lens 30° is specifically designed for 7070 LEDs, offering a narrow 30° beam angle for precise and focused lighting.
2. Its advanced optical design ensures optimal light control, making it ideal for applications such as spotlights, and architectural accents.

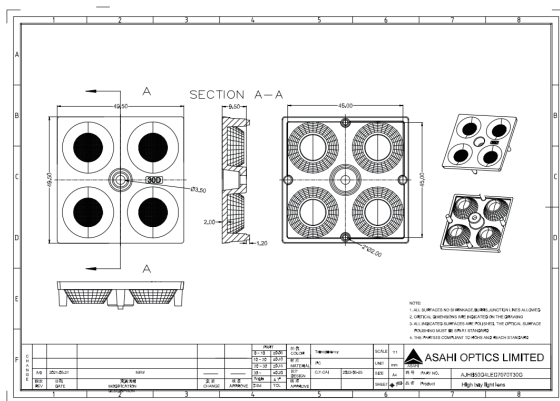


LENS LIGHT DISTRIBUTION & APPLICATION



30°

LENS DRAWING



LED TYPE



5050LED



4x3030LED

LED BRAND

