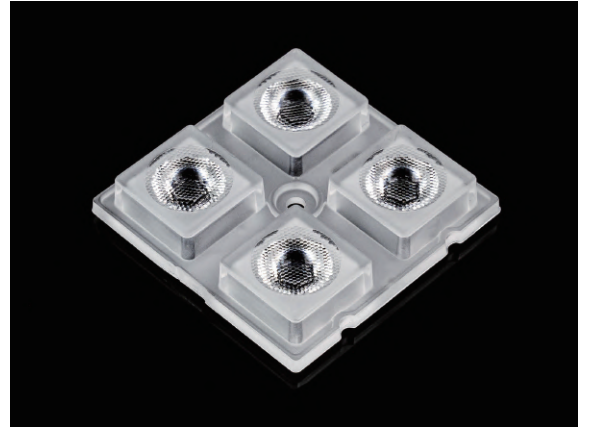


2x2 50° Wide Beam Industrial Lens 5050 Flood Light Lens

Model:	AJHB50D4LED5050T50G
Size:	50x50(mm)
Height:	8.0mm
Beam Angle:	50°
Material:	PC-1250Z
Transmittance:	> 90%
LED Type:	3535LED/5050LED

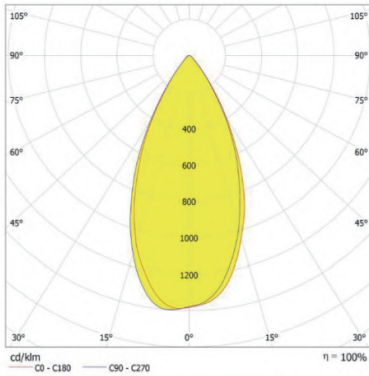


FEATURES

1. The 2x2-50 degree lens compatible for 3535 and 5050LED, provides a balanced and versatile illumination.
2. 2x2-50degree lens suitable for a wide range of lighting scenarios. Whether used in warehouses, manufacturing facilities, or indoor sports arenas etc.
3. It's made of high quality PC material with excellent UV resistance.



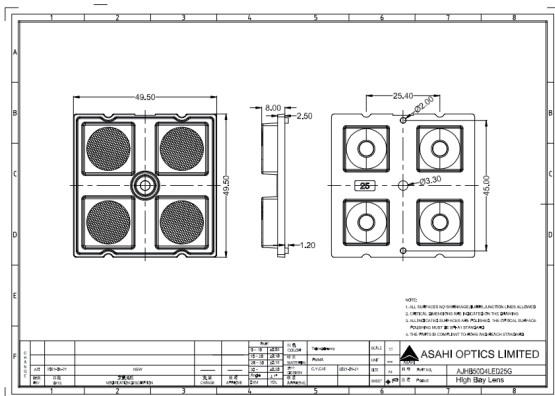
LENS LIGHT DISTRIBUTION & APPLICATION



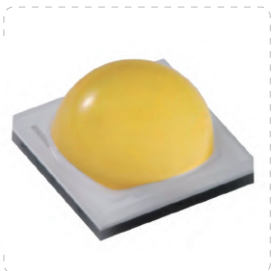
50°



LENS DRAWING



LED TYPE



3535LED



5050LED

LED BRAND

