

Street Lighting 2x6 Lens T3M 3535LED IP66 PC Material

Model:	ALST173D12LED3535T3M
Size:	173x71.4mm
Height:	9.19
Beam Angle:	T3M Asymmetric
Material:	PMMA
Transmittance:	>93%
LED Type:	3535LED

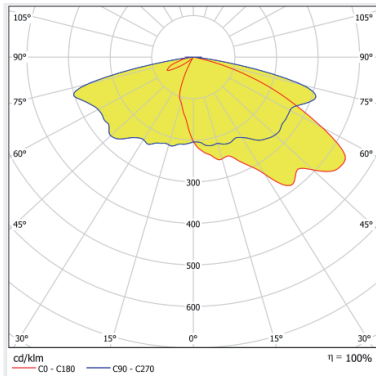


FEATURES

1. The design of the 2x6 Type III-Medium lens is professionally designed to provide precise illumination distribution, particularly suitable for street and large outdoor areas.
2. Its shape and optical characteristics ensure uniform lighting, enhancing visibility and safety.
3. Applicable to different outdoor settings, including street lighting, parks, and parking lots, providing an efficient lighting solution.



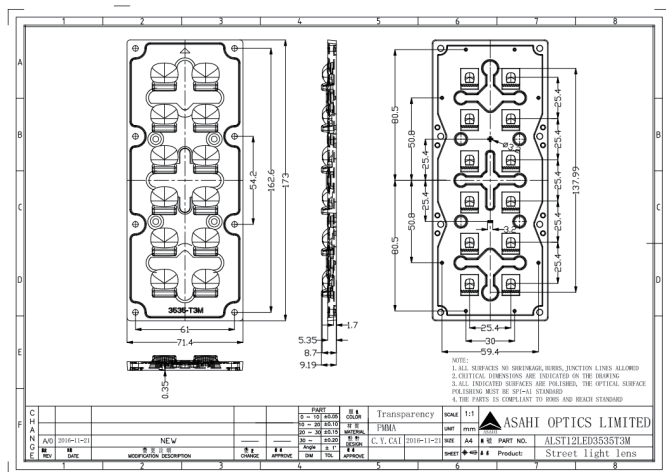
LENS LIGHT DISTRIBUTION & APPLICATION



T3M Asymmetric



LENS DRAWING



LED TYPE



3535LED



3535LED

LED BRAND

