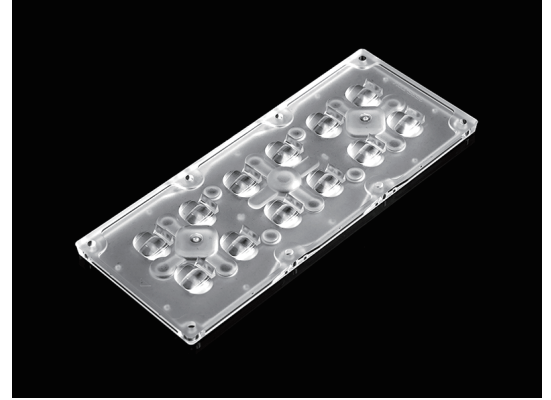


## IK10 2x6 Lens T2M 3535LED IP66 Road Lighting Optics

|                |                      |
|----------------|----------------------|
| Model:         | ALST173D12LED3535T2M |
| Dimensions:    | 173x71.4mm           |
| Height:        | 9.10mm               |
| Beam Angle:    | T2M                  |
| Material:      | PMMA                 |
| Transmittance: | >93%                 |
| LED Type:      | 3535LED              |

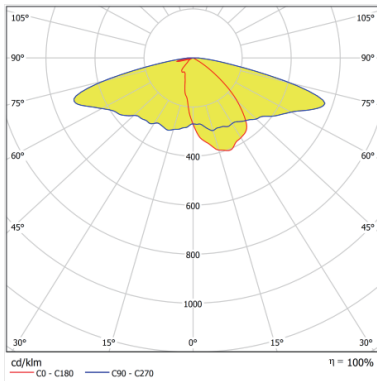


### FEATURES

1. 2x6 3535 street lighting lens is made of Teijin PC Material with excellent hardness and can pass IK10.
2. This lens is tailored specifically for 3535 LED, ensures optimal optical performance and efficient utilization of the LED.
3. The high IP66 rating ensures exceptional resistance against dust and water, allowing the lens to operate reliably in diverse and challenging weather and environmental conditions.



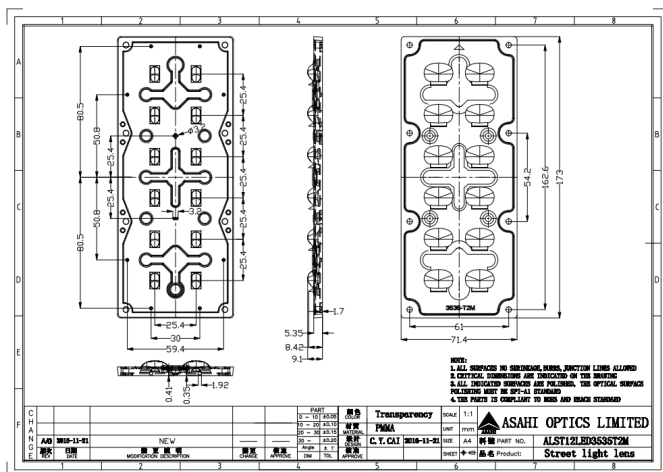
## LENS LIGHT DISTRIBUTION & APPLICATION



T2M



## LENS DRAWING



## LED TYPE



3535LED



3535LED

## LED BRAND

