

2x6 Lens Array 5050LED 60 Degree Flood Lighting Lens

Model:	ALD173D12LED60G
Size:	173x71.4(mm)
Height:	9.4mm
Beam Angle:	60°
Material:	PC-1250Z
Transmittance:	> 90%
LED Type:	5050 LED

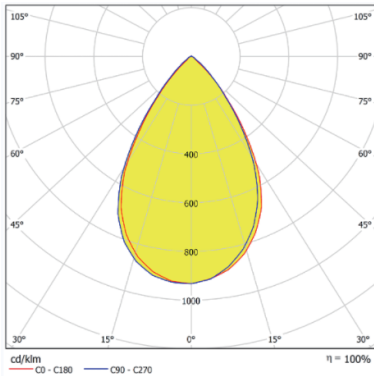


FEATURES

1. 2x6 60degree high bay lighting lens designed with dome structure.
2. The design of the dome lens enables wide-angle light coverage, making it suitable for applications that require extensive illumination, such as outdoor areas and squares.
3. The dome structure contributes to achieving uniform light distribution, reducing unevenness in the illuminated area and improving lighting uniformity.



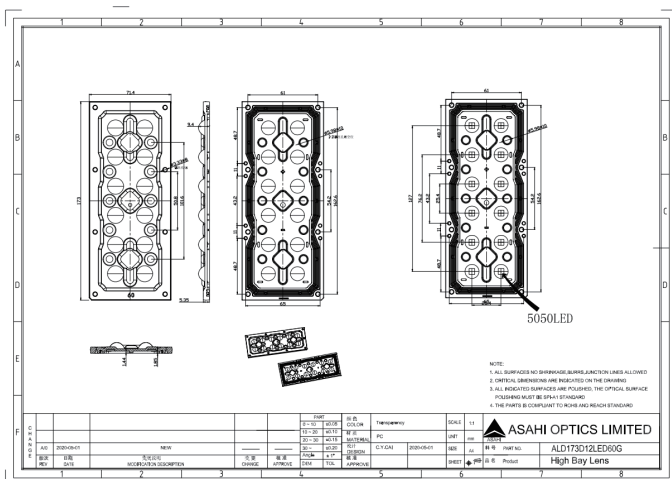
LENS LIGHT DISTRIBUTION & APPLICATION



60°



LENS DRAWING



LED TYPE



5050LED



5050LED

LED BRAND

