

8in1 Lens T2M 3535LED Packages Roadway Light Optic

Model:	ALST50D8LED3535T2M
Size:	49.5x49.5(mm)
Height:	6.62mm
Beam Angle:	T2M Asymmetric
Material:	PMMA
Transmittance:	> 93%
LED Type:	3535LED

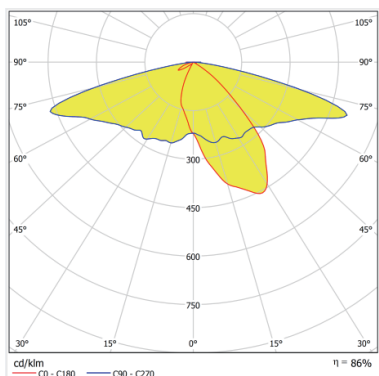


FEATURES

1. 8x1 Typell-Medium street lens compatible with 3535LEDs. Suitable for various outdoor lighting applications, including street lighting, parking lots, highways, and residential areas.
2. Through specialized optical design, the Type II-Medium lens can reduce upward or surrounding light scatter, helping to minimize light pollution levels and concentrating light where it's needed.
3. Designed to minimize light spill and skyglow, helping to preserve the night sky's natural darkness and reduce light pollution.



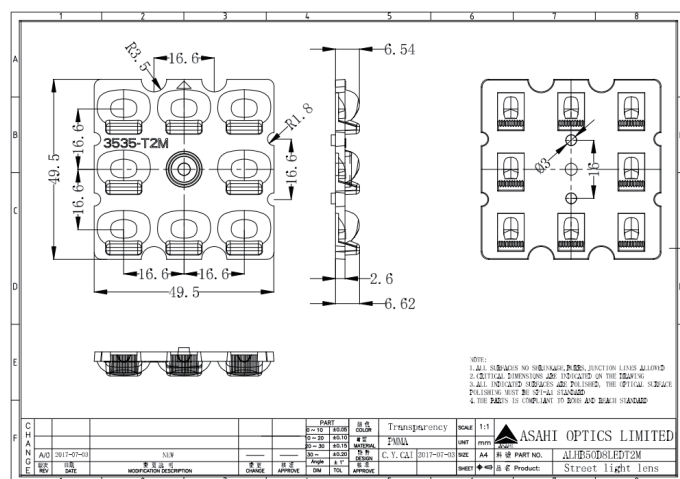
LENS LIGHT DISTRIBUTION & APPLICATION



T2M Asymmetric



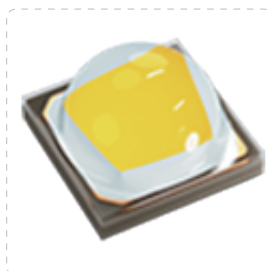
LENS DRAWING



LED TYPE



3535LED



3535LED

LED BRAND

