

## 8LEDs lens 5050 T4M for street lighting

Model:	AJST50D8LEDT4
Size:	49.5x49.5(mm)
Height:	4.86mm
Beam Angle:	T4M
Material:	PC
Transmittance:	> 88%
LED Type:	3030/ 5050LED

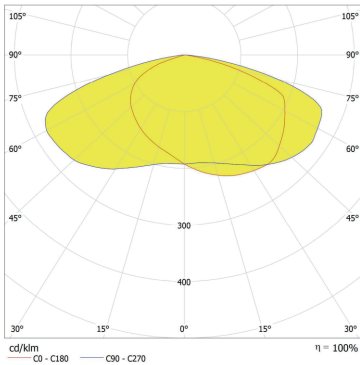


## FEATURES

1. The 50x50mm 8LED Lens T4 is engineered with advanced optical technology to deliver superior light distribution and efficiency to meet area lighting requirements.
2. The 50x50mm 8LED Lens ensures consistent brightness and minimal light loss, making it a reliable choice for high-intensity lighting needs.



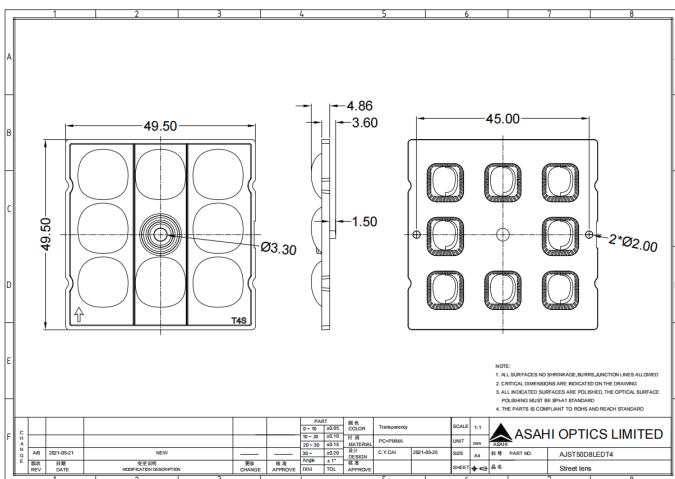
## LENS LIGHT DISTRIBUTION & APPLICATION



T4M



## LENS DRAWING



## LED TYPE



3030LED



5050LED

## LED BRAND

