

## 8LEDs lens 5050 T3M for street lighting

Model:	AJST50D8LEDT3
Size:	49.5x49.5(mm)
Height:	4.79mm
Beam Angle:	T3M
Material:	PC
Transmittance:	> 88%
LED Type:	3030/5050LED

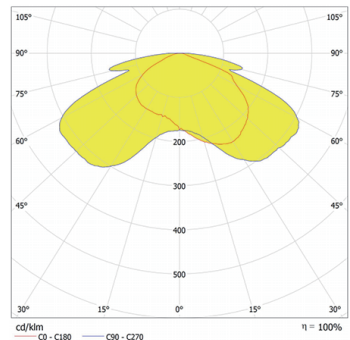
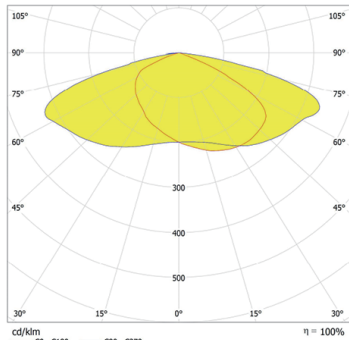


## FEATURES

1. The 50x50mm 8LED Lens T3 is engineered with advanced optical technology to deliver superior light distribution and efficiency to meet wide road lighting requirements.
2. The 50x50mm 8LED Lens ensures consistent brightness and minimal light loss, making it a reliable choice for high-intensity lighting needs.



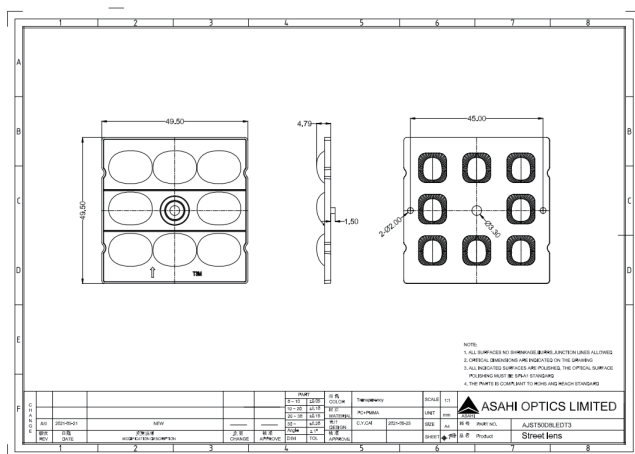
## LENS LIGHT DISTRIBUTION & APPLICATION



T3M



## LENS DRAWING



## LED TYPE



3030LED



5050LED

## LED BRAND

