

8LEDs T2M lens designed by 5050LED for street lighting

Model:	AJST50D8LEDT2
Size:	49.5x49.5(mm)
Height:	4.69mm
Beam Angle:	T2M
Material:	PC
Transmittance:	> 88%
LED Type:	3030/5050LED

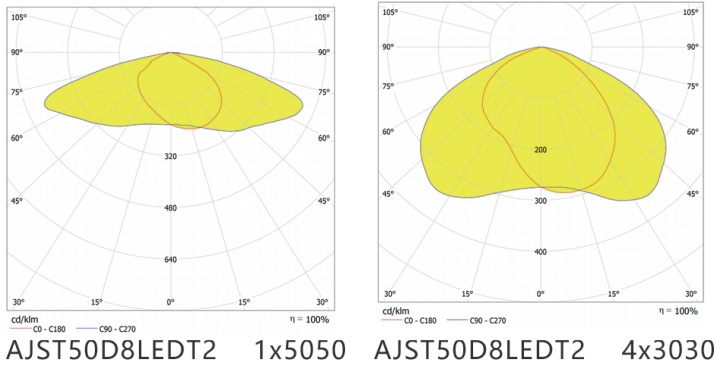


FEATURES

1. The 8LED lens T2M is specifically designed for 5050 LEDs, providing superior light output and uniform distribution for road lighting applications.
2. This 8LED lens maximizes the efficiency of 5050 LEDs, delivering high brightness while minimizing energy consumption. Its design reduces light loss and enhances the performance of LED systems, offering a cost-effective and eco-friendly solution for road lighting.



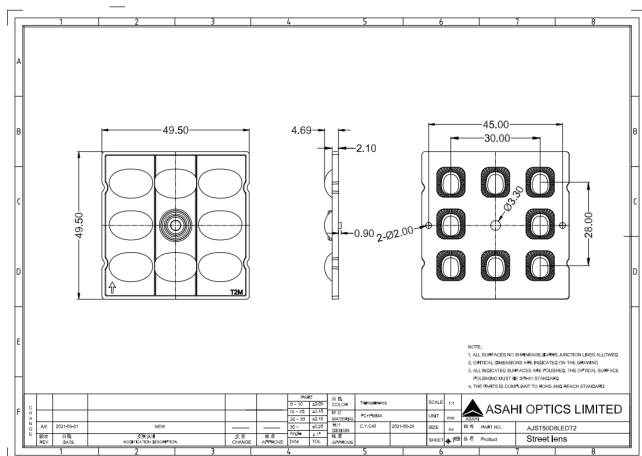
LENS LIGHT DISTRIBUTION & APPLICATION



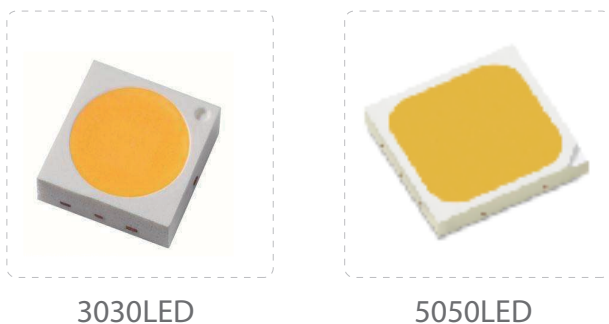
T2M



LENS DRAWING



LED TYPE



LED BRAND

