

8LEDs lens asymmetric beams for sport lighting

Model:	AJSP50D8LED45G
Size:	49.6x49.6(mm)
Height:	8.11mm
Beam Angle:	45°
Material:	PC
Transmittance:	> 88%
LED Type:	5050LED

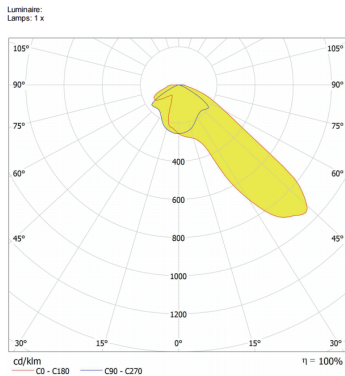


FEATURES

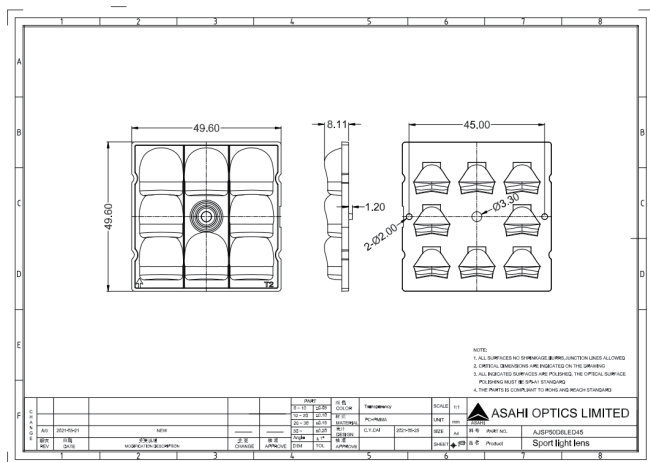
1. The 50x50mm 8LED Lens Asymmetric 45° features an advanced asymmetric beam design, providing narrow forward beams and illumination with uniform light distribution.
2. The 50x50mm 8LED Lens asymmetric beam angle ensures minimal light spillage and maximum efficiency, making it a reliable choice for sport lighting.



LENS LIGHT DISTRIBUTION & APPLICATION



LENS DRAWING



LED TYPE



5050LED



5050LED

LED BRAND

