

## 8LEDs Lens narrow beam 30°for High bay lighting

Model:	AJHB50D8LED30G
Size:	49.6x49.6(mm)
Height:	6.8mm
Beam Angle:	30°
Material:	PC
Transmittance:	> 88%
LED Type:	3030/ 5050LED

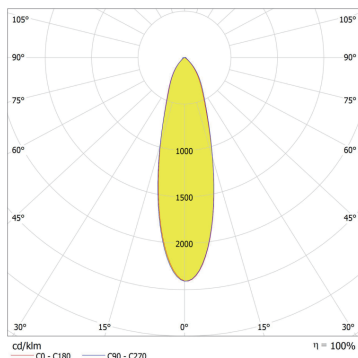


### FEATURES

1. The 50x50mm 8LED Lens 30° is designed with a precise 30-degree beam angle, offering focused and uniform light distribution.
2. The 50x50mm 8LED Lens 30° is ideal for applications requiring concentrated illumination, such as stadium lighting, street lights, and projector systems, ensuring optimal visibility and energy efficiency.



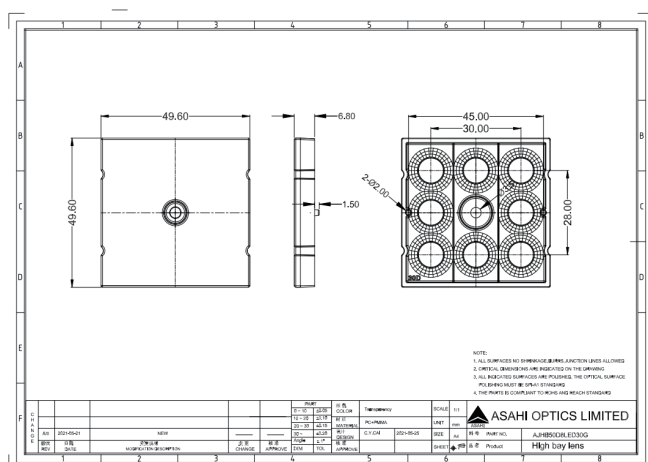
## LENS LIGHT DISTRIBUTION & APPLICATION



30°



## LENS DRAWING



## LED TYPE



3030LED



5050LED

## LED BRAND

