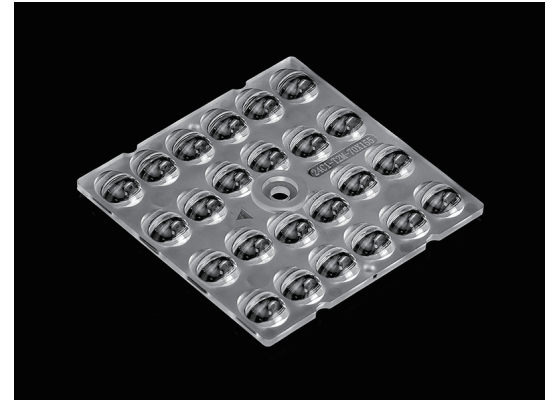


24LED Street Light Optics 3030LED T2 Short Beam

Model:	ALST50D24LEDT2S
Size:	50x50(mm)
Height:	3.95mm
Beam Angle:	T2S
Material:	PC
Transmittance:	> 93%
LED Type:	3030LED

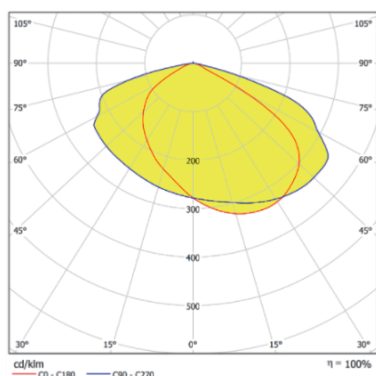


FEATURES

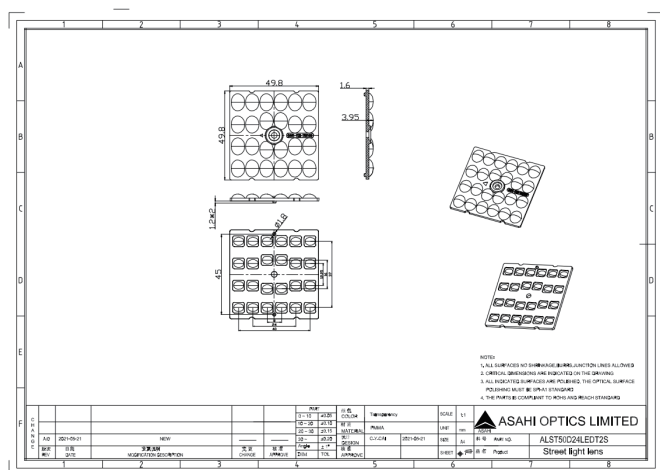
1. The high quality 4X6 layout 120-degree lens is ideal for outdoor applications such as decks, courtyards, parking lots, etc., due to its wide Angle of 120 degrees.
2. Since it is outdoor lighting, we mostly use PC materials to produce our 24in1 lens. Because PC materials can withstand higher temperatures than PMMA materials.
3. Provides a wide beam coverage, making it ideal for illuminating large areas with a uniform and consistent light pattern.



LENS LIGHT DISTRIBUTION & APPLICATION



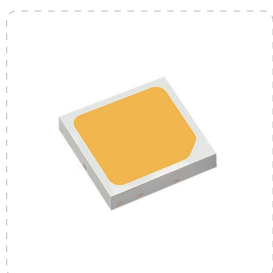
LENS DRAWING



LED TYPE



3030LED



3030LED

LED BRAND

