

24LEDs high bay lens provides a narrow beam angle of 25°

| | |
|----------------|-----------------|
| Model: | AJHB50D24LEDT25 |
| Size: | 50x50(mm) |
| Height: | 5.6mm |
| Beam Angle: | 25° |
| Material: | PC |
| Transmittance: | > 93% |
| LED Type: | 3030LED |

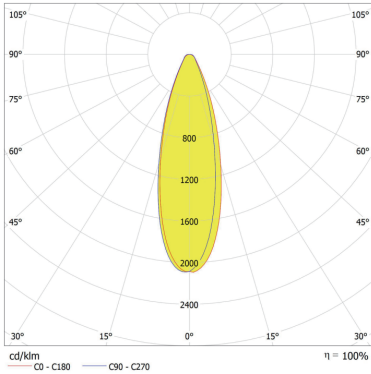


FEATURES

1. The 24 LEDs lens for high bay with 3030 LED provides 25° beam angle for focused and efficient lighting in industrial and commercial settings.
2. This type of lens is designed to optimize the distribution of light, ensuring maximum illumination with minimal energy consumption. It is ideal for high bay applications where bright and uniform light coverage is required.
3. The lens designed with 3030LED, which offers high performance and reliability, making it a cost-effective solution for lighting large spaces.



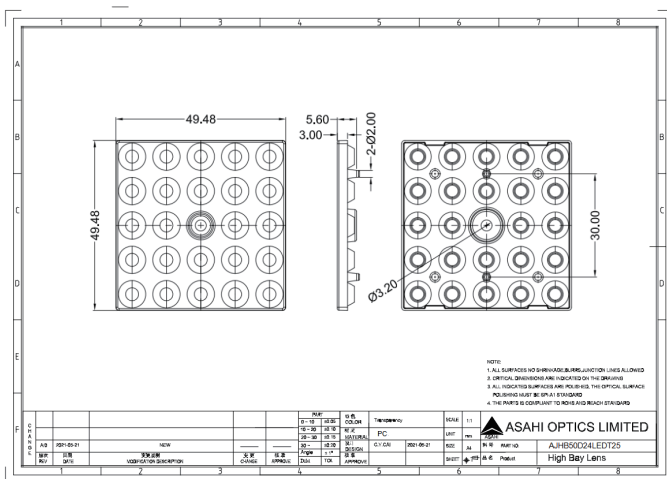
LENS LIGHT DISTRIBUTION & APPLICATION



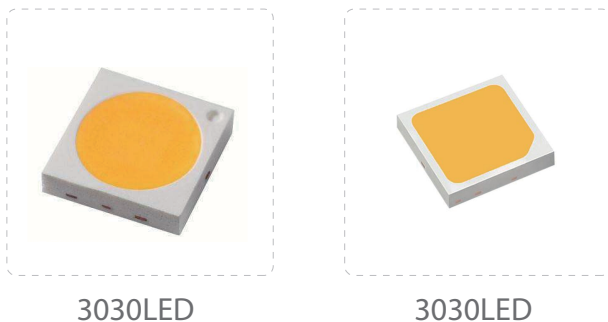
25°



LENS DRAWING



LED TYPE



LED BRAND

