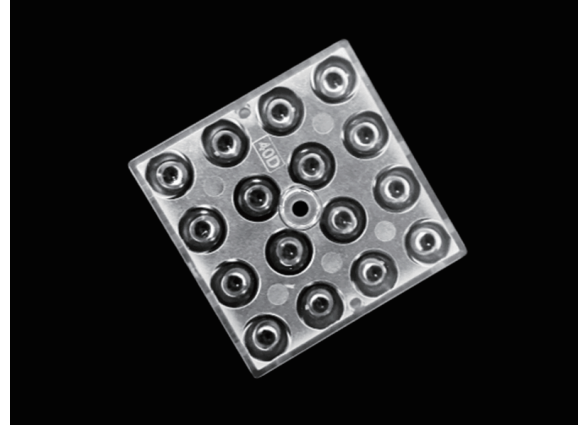


The 4x4 LEDs lens 40° is compatible with 3030LEDs

Model:	ALHB50D16LED40G
Size:	50x50(mm)
Height:	7.8mm
Beam Angle:	40°
Material:	PC-1250Z
Transmittance:	>90%
LED Type:	3030 LED

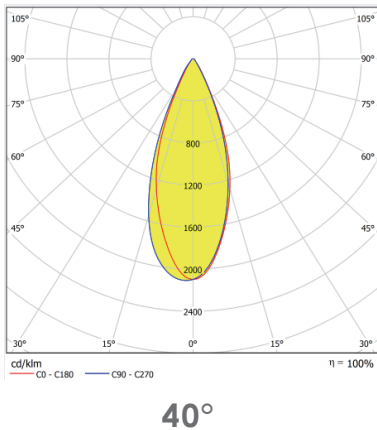


FEATURES

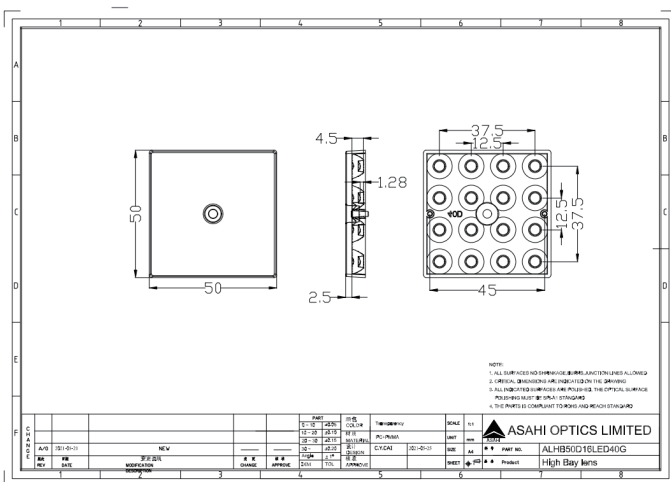
1. 16LEDs lens for 3030LED beam with a 40° angle is specifically designed to provide optimal light distribution and intensity for various lighting applications.
2. The 4x4 LEDs lens is compatible with 3030LEDs, which are popular light sources known for their high brightness and energy efficiency.
3. The 40° beam angle of the lens allows for focused and uniform lighting in a specific area, making it suitable for applications such as street lighting, architectural lighting, and outdoor area lighting.



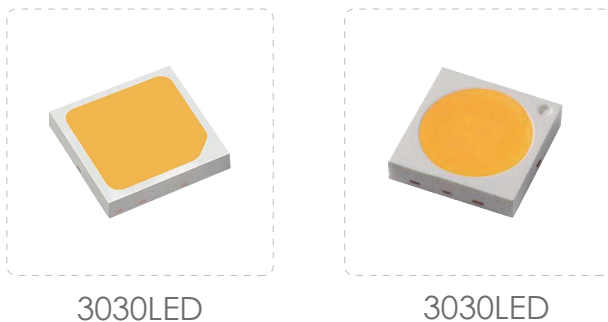
LENS LIGHT DISTRIBUTION & APPLICATION



LENS DRAWING



LED TYPE



LED BRAND

