

4x4 3030LED High-efficiency Wide-area Lighting Lens

Model:	ALST50D16LEDT5R
Size:	50x50(mm)
Height:	4.82mm
Beam Angle:	T5 square beam TYPEIV
Material:	PC-1250Z
Transmittance:	>90%
LED Type:	3030 LED

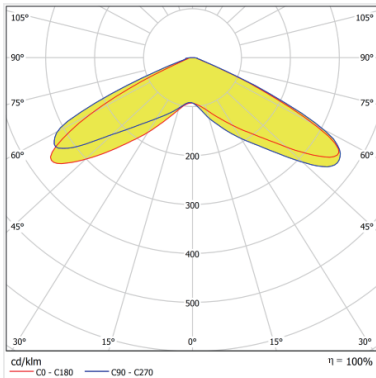


FEATURES

- 1.Type V beam angle is Suitable for long-distance lighting: Due to the narrow and long beam distribution characteristics of the Type IV corner lens, it is suitable for long-distance lighting.
2. For example, it is used to illuminate roads or large parking lots and other places where long-distance lighting is required. It can effectively project light to a distance, providing sufficient lighting intensity and coverage.



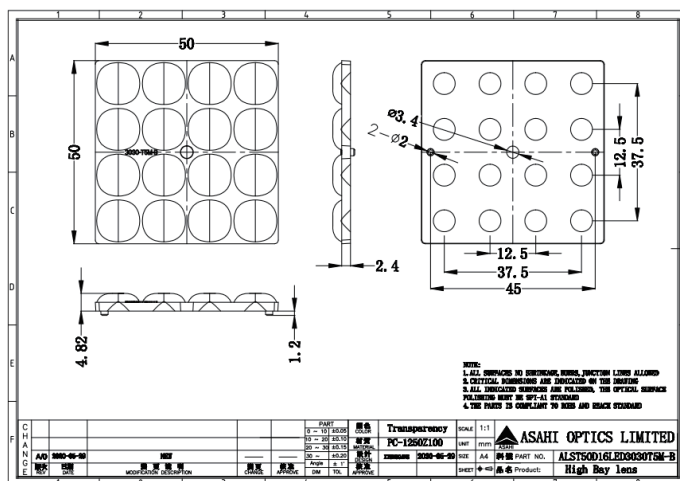
LENS LIGHT DISTRIBUTION & APPLICATION



T5 square beam TYPEIV



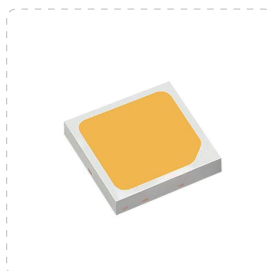
LENS DRAWING



LED TYPE



3030LED



3030LED

LED BRAND

