

50mm 16in1 3030LED TypeIV Smart Urban Lighting Lens

Model:	ALST50D16LEDT4S
Size:	50x50(mm)
Height:	5.4mm
Beam Angle:	T4S
Material:	PC-1250Z TEIJIN
Transmittance:	>90%
LED Type:	3030 LED

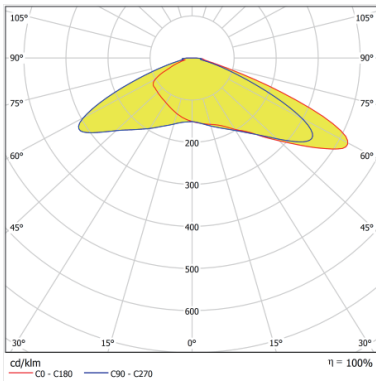


FEATURES

1. 50mm 16in1 3030LED Type IV beam angle Lens
2. Suitable for long-distance lighting: Due to the narrow and long beam distribution characteristics of the Type IV beam angle lens, it is suitable for long-distance lighting.
3. For example, it is used to illuminate roads or large parking lots and other places where long-distance lighting is required. It can effectively project light to a distance, providing sufficient lighting intensity and coverage.



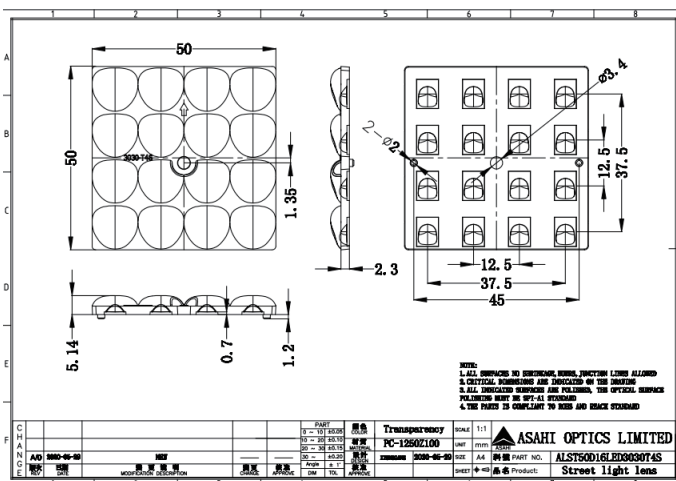
LENS LIGHT DISTRIBUTION & APPLICATION



T4S



LENS DRAWING



LED TYPE



3030LED



3030LED

LED BRAND

