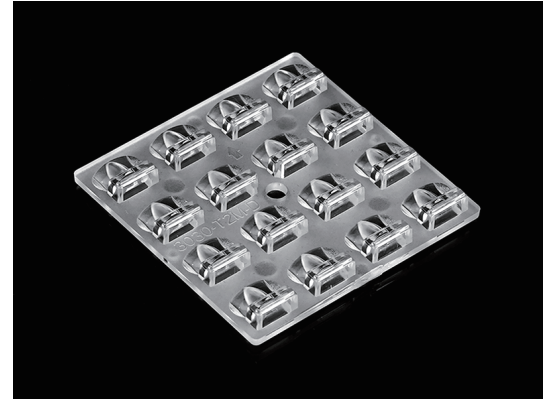


## 50mm Outdoor Street Lighting 16LED T2M-D Asymmetric

Model:	ALST50D16LEDT2M-D
Size:	50x50(mm)
Height:	5.68mm
Beam Angle:	T2M Asymmetric
Material:	PC-1250Z TEIJIN
Transmittance:	>90%
LED Type:	3030 LED

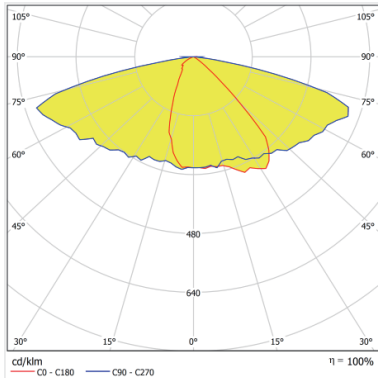


### FEATURES

1. 50mm Outdoor Street Lighting 16LED T2M-D Asymmetric, LED spacing is 12.5mm.
2. The lens is structured with a baffle that reduces the Backlight.,
3. By blocking the light behind the pole, adding a baffle can improve the utilization of light, effectively guide and project more light to the target area, and provide a higher lighting effect.



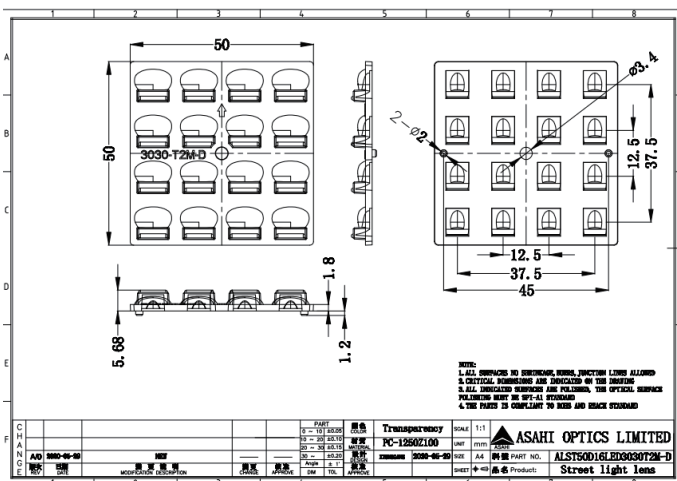
## LENS LIGHT DISTRIBUTION & APPLICATION



T2M Asymmetric



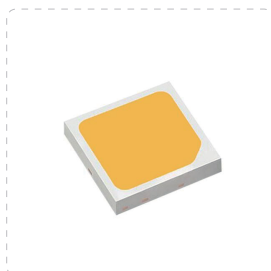
## LENS DRAWING



## LED TYPE



3030LED



3030LED

## LED BRAND

