

50mm 12in1 90degree 3030LED High Bay Lighting Lens

Model:	ALHB50D12LED3030T90G
Size:	50x50(mm)
Height:	4.02mm
Beam Angle:	90°
Material:	PC-1250Z
Transmittance:	> 90%
LED Type:	3030LED

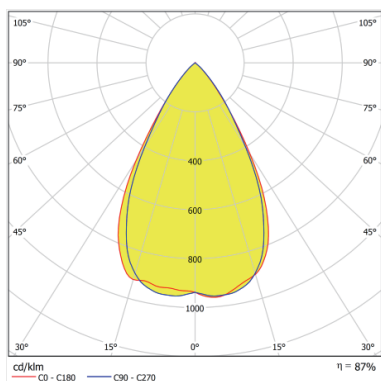


FEATURES

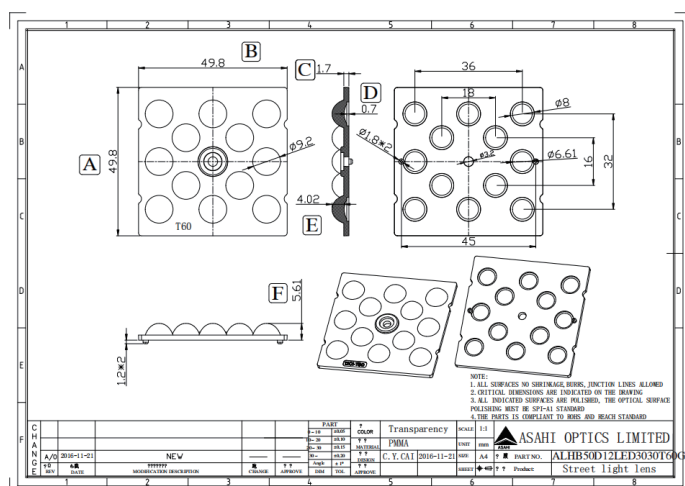
1. The 12x1 lens design, coupled with the 90° wide beam angle, making it ideal for illuminating large areas with a uniform and consistent light pattern.
2. Well-suited for a variety of outdoor floodlighting applications, including sports arenas, architectural facades, and large open spaces.
3. Designed for easy and straightforward installation.



LENS LIGHT DISTRIBUTION & APPLICATION



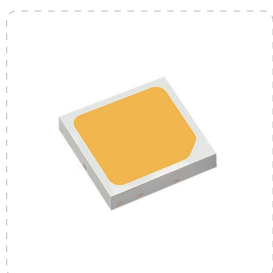
LENS DRAWING



LED TYPE



3030LED



3030LED

LED BRAND

